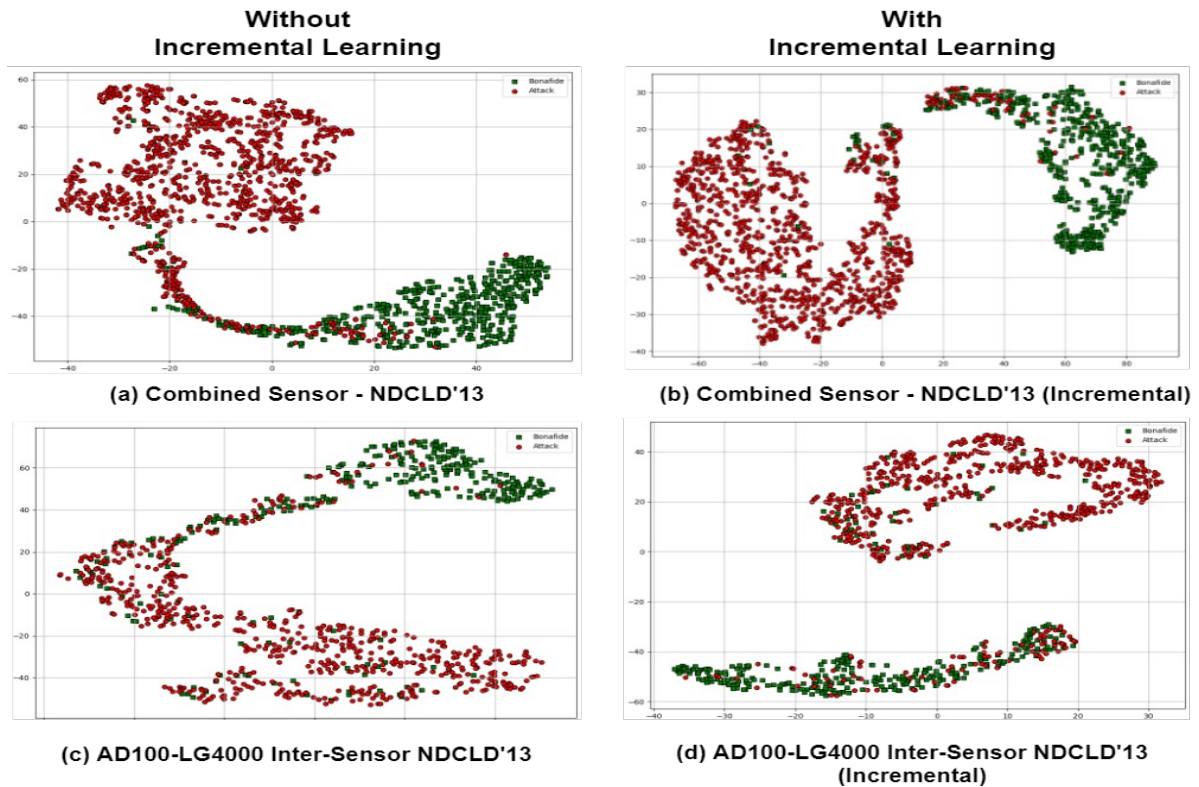
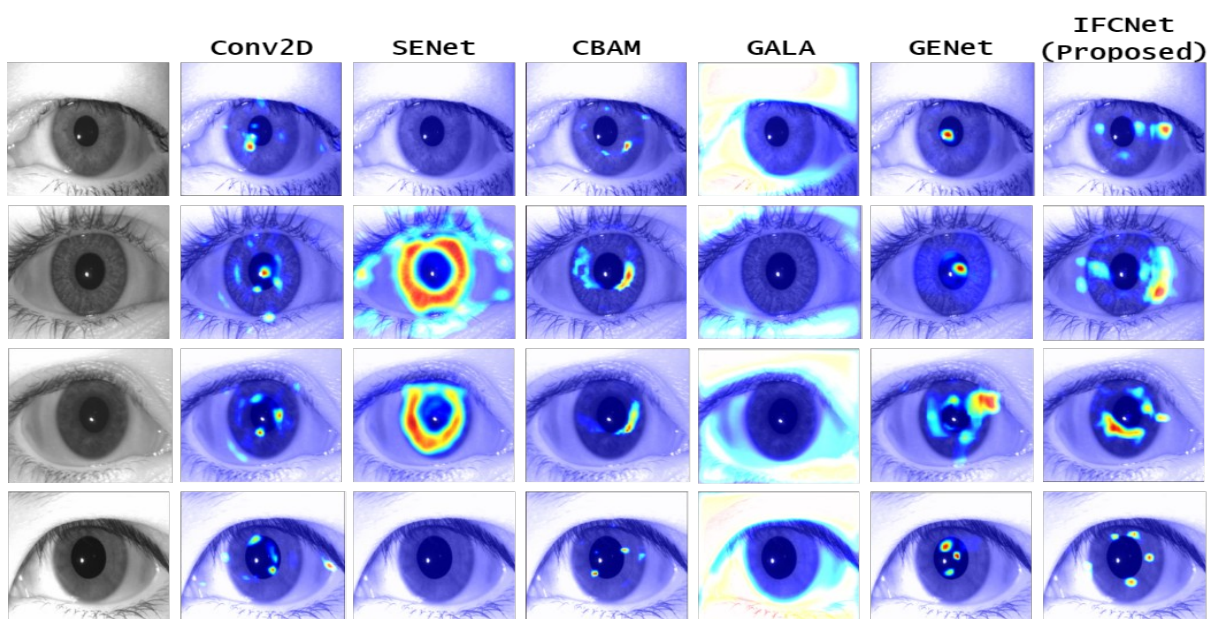


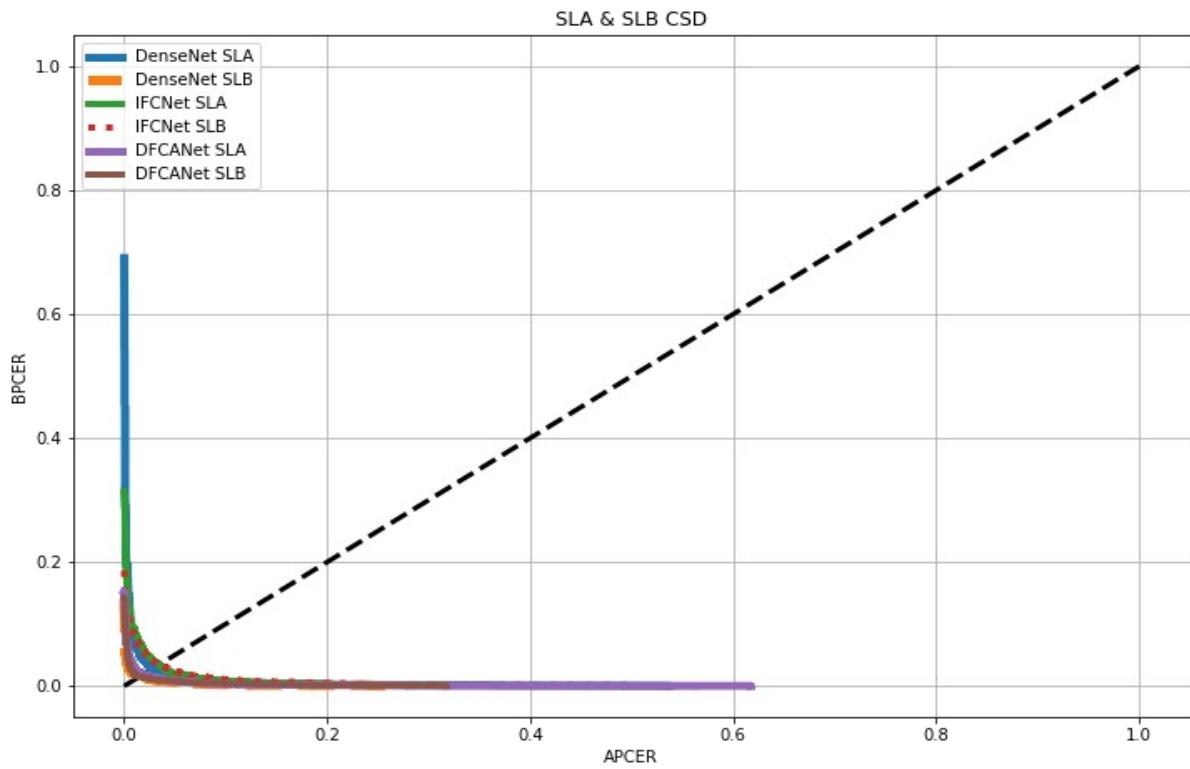
Learning Joint Local-Global Iris Representations via Spatial Calibration for Generalized Presentation Attack Detection



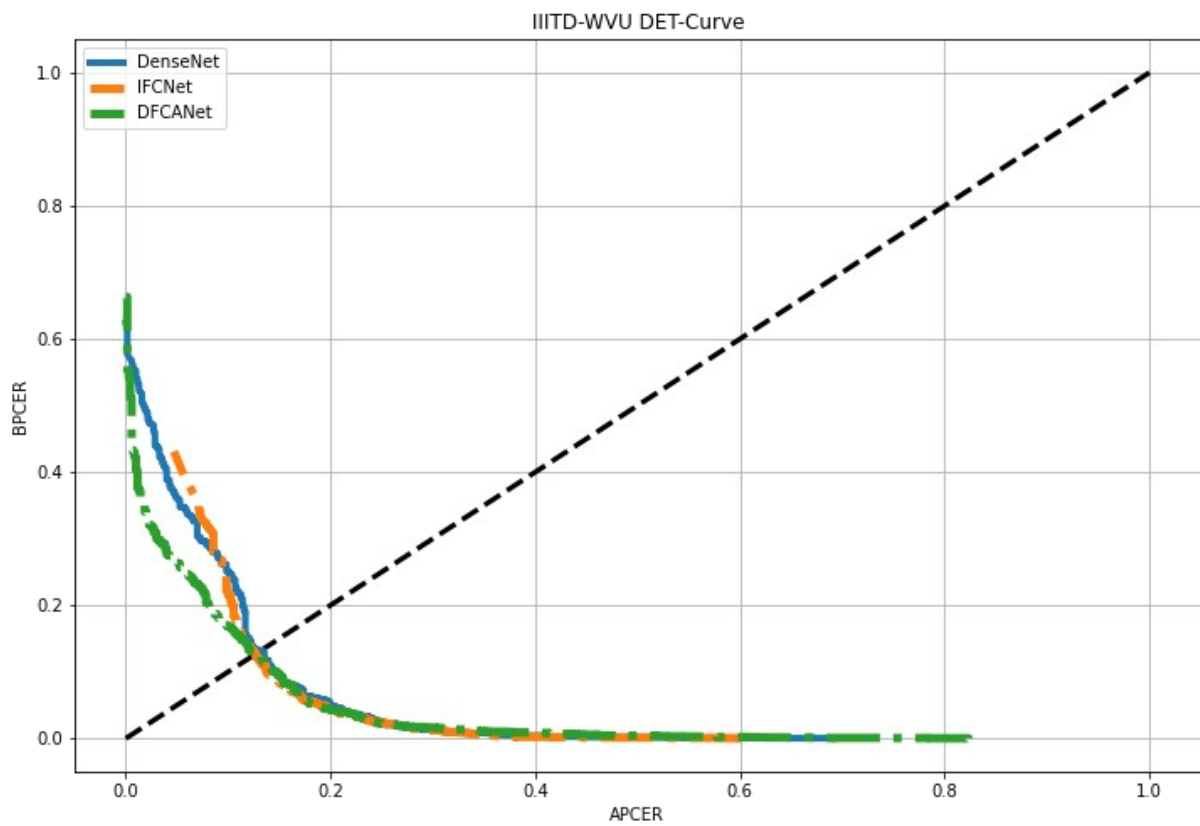
Appendix 1: t-SNE comparison of embedding with (b, d) and without (a, c) incremental learning training. t-SNE plots have been considered from inter (a, b) and combined sensor experiments (c, d).



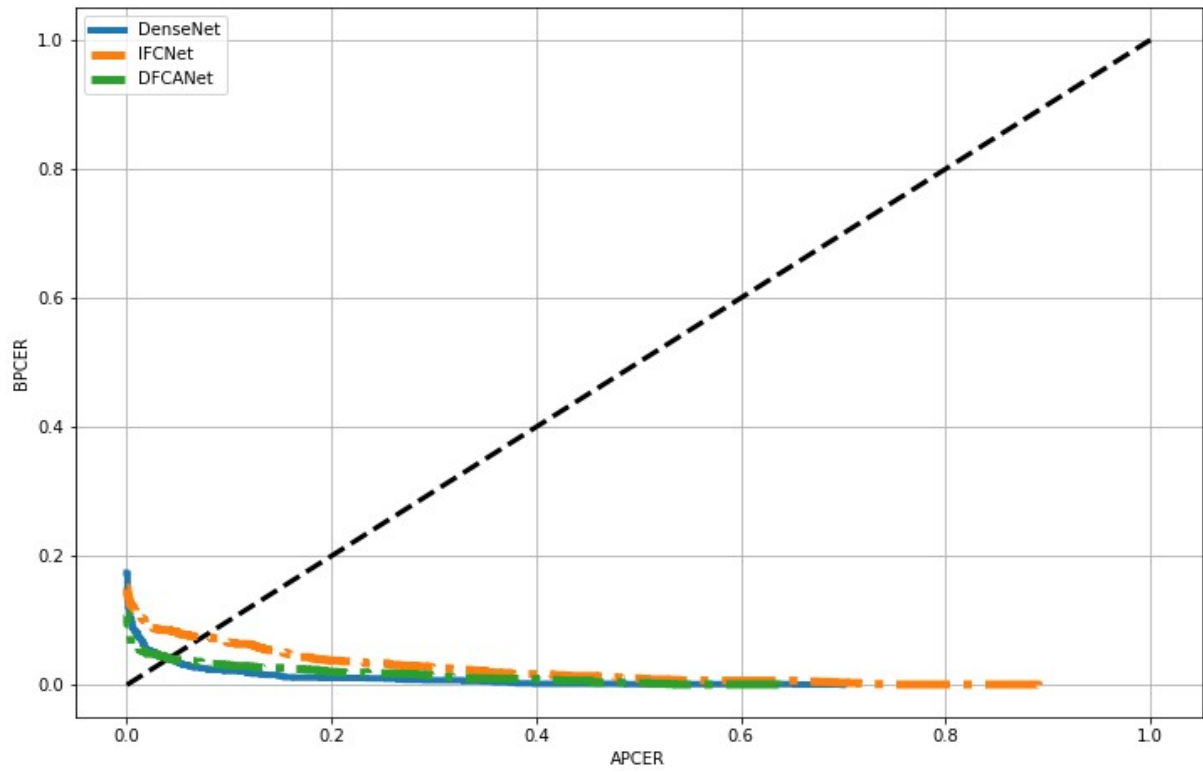
Appendix 2: Visual comparison of Grad-CAM output of IFCNet and other state-of-the-art models.



Appendix 3: DET plot for comparing IIIT-CSD experiments.



Appendix 4: DET plot for comparing IIIT-WVU experiments.



Appendix 5: DET plot for comparing Clarkson-17 experiments.